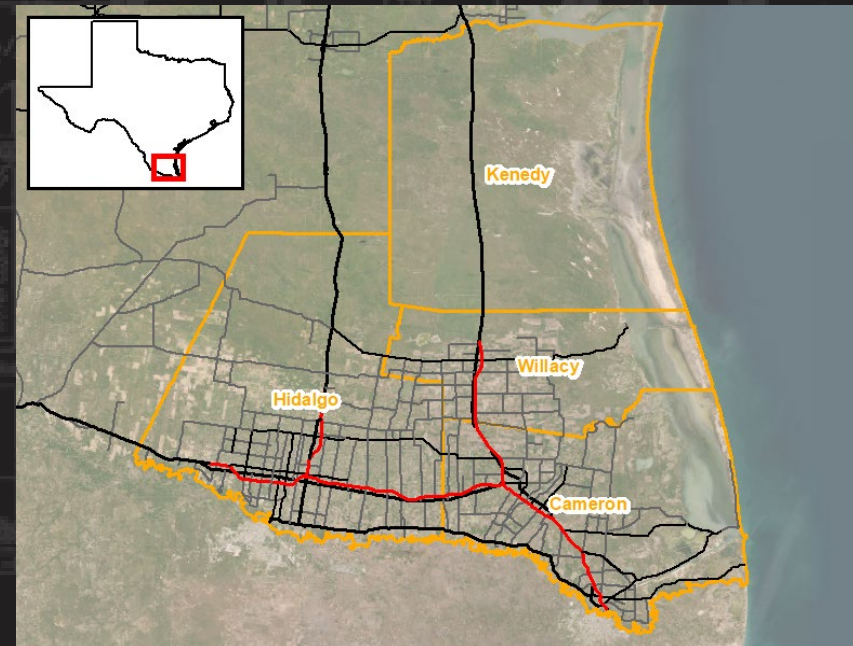


# LOWER RIO GRANDE VALLEY WATERSHED ASSESSMENT

Aaron Chastain  
Project Manager



US Army Corps  
of Engineers®



# PROJECT INFORMATION



## Authorization

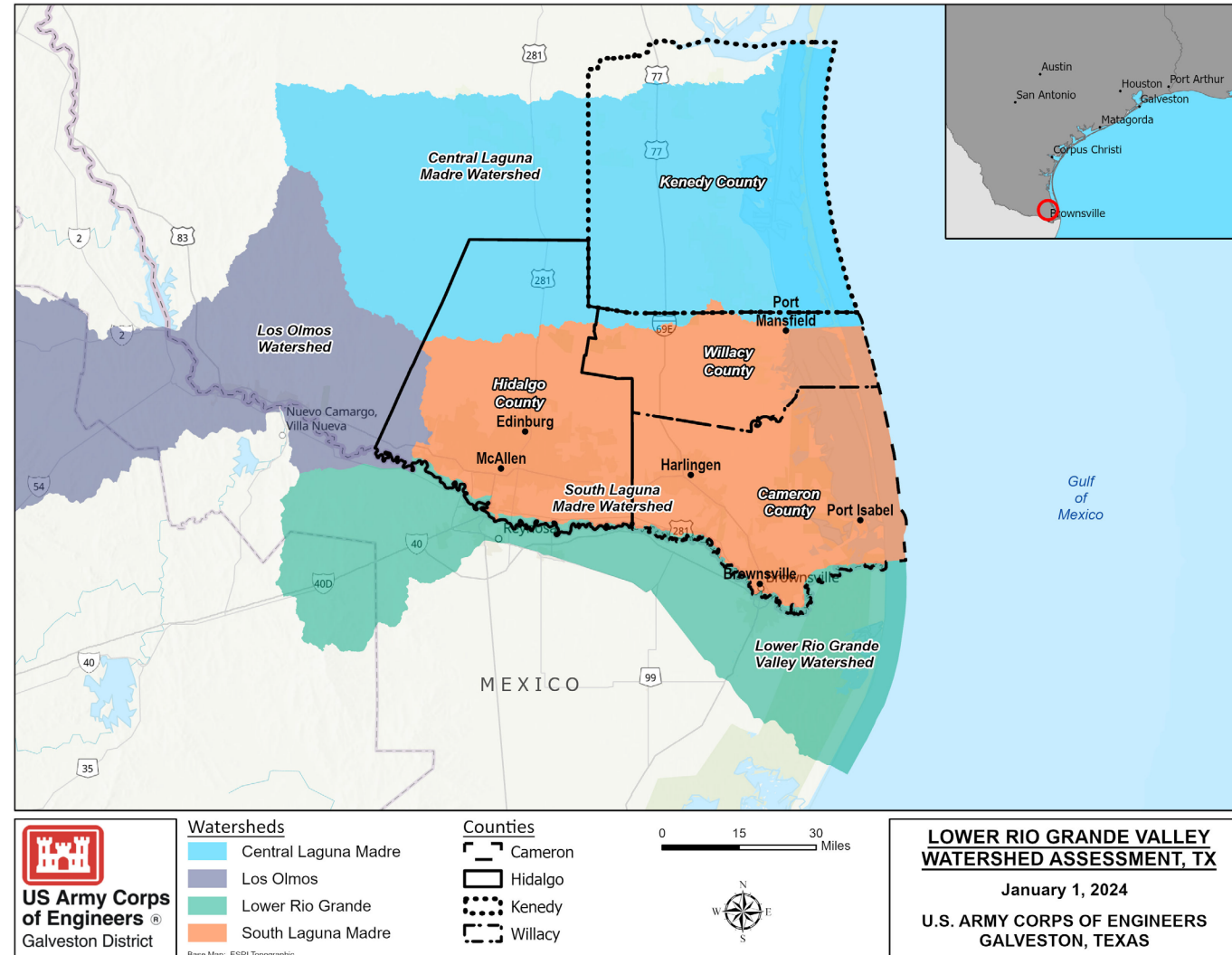
- WRDA of 1986 (33.U.S.C. 2267a), Section 729, as amended in WRDA 2000, WRDA 2007, P.L. 110-114

## Non-Federal Sponsor

- Cameron County

## Study Area

- The LRGVWA study area is within the Texas-Gulf water resources region
- Defined by HUC 10 Watersheds within or contributing to conditions in Cameron, Hidalgo, Willacy, and Kenedy counties
- Combined population of approximately 1.5 million





# STUDY GOALS AND OBJECTIVES



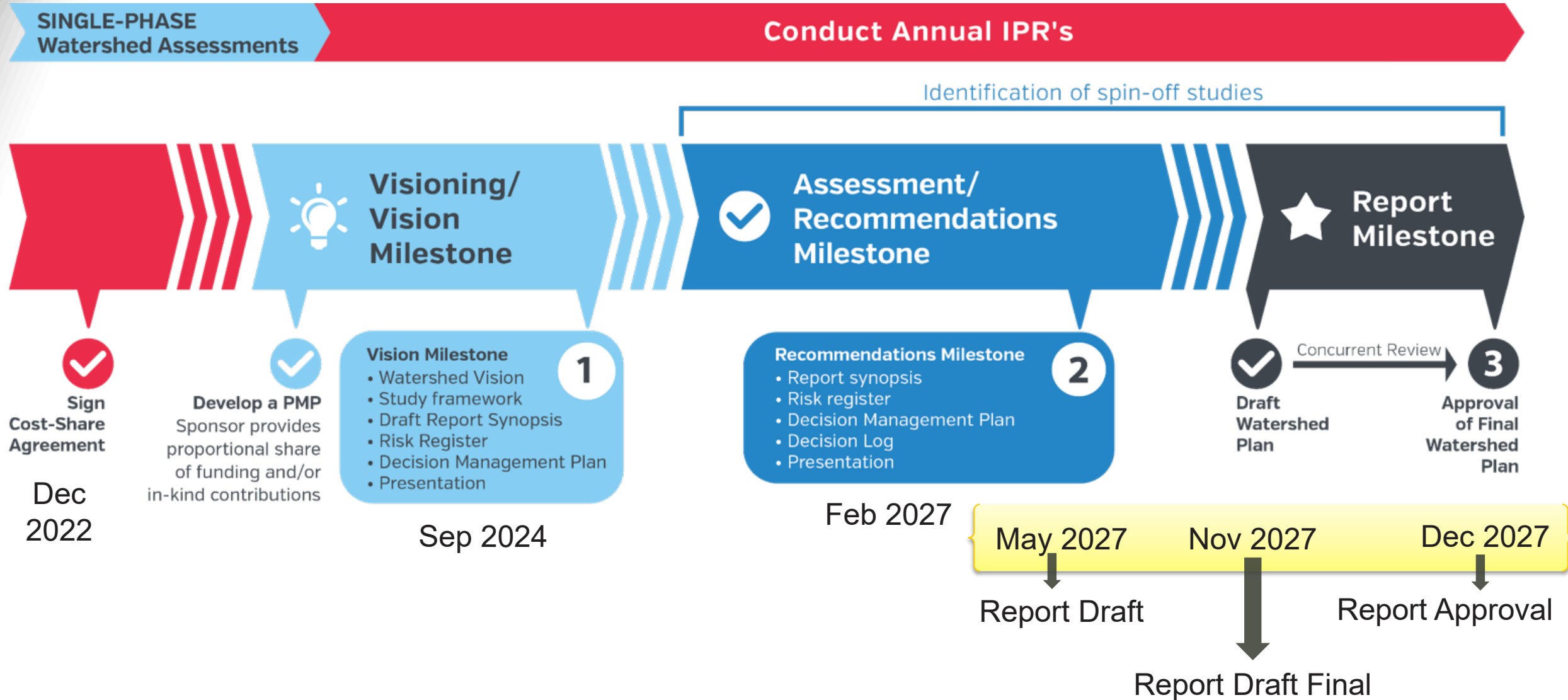
**Study goals:** To provide a comprehensive water resource management strategy for the LRGV, in collaboration with the LRGV community and stakeholders

## Focus on:

- Increasing resilience from Flood Risk Management and Coastal flood hazards.
- Increasing resilience in Socially Vulnerable Communities (SVC) and EJ communities from water resource related challenges.
- Improving ecological systems and natural resource resilience.
- Improving water supply and quality.
- Water resource challenges outside traditional Corps mission areas, such as stormwater drainage.

Objectives may include:			
Increase regional resiliency	Increase community outreach/education	Improve long term resilience of infrastructure to climate change	NNBF features that reduce flood risk AND support ecosystem resources
Improve water quality	Create regional plans	Increase level of standardization for codes and ordinances	Improve reliability and resiliency

# SCHEDULE





U.S. ARMY



US Army Corps  
of Engineers®

# OPPORTUNITIES

5



Opportunities exist to:

- Improve resilience of the region
- Manage the risks associated with flooding
- Utilize natural and nature-based features
- Improve floodplain management and restore floodplain functionality



# SHARED VISION TYPICAL ACTIVITIES

1. Assemble a PDT that includes participation with partners and stakeholders.
2. Define the study area with partners and stakeholders to capture impacts and influences of broadly identified problems and opportunities.
3. Work with partners and stakeholders including local, state, and federal agencies; tribes; and the public; to develop a concise Study Vision Statement.
4. Develop broad study goals and objectives that capture the breadth of interests to be served.
5. Document partner and stakeholder support and concurrence on the shared vision from federal and non-federal partners. Documentation of cooperation and coordination activities with required federal agencies (Departments of Interior, Commerce, Agriculture, and the Environmental Protection Agency) should be provided, even if these agencies have declined to participate.
6. Develop a Study Framework identifying the roles and responsibilities of USACE and its partners, with associated tasks that will advance the shared vision. In the Study Framework, describe how these tasks incrementally contribute to the shared vision.
7. Consider how various agency authorities may be combined to align and prioritize future water resources actions within the watershed.



U.S. ARMY



US Army Corps  
of Engineers®



# SHARED VISION STATEMENT - DRAFT

Cameron County in partnership with Hidalgo and Willacy County, and the State of Texas, recognize the challenges the Lower Rio Grande Valley faces. Water resource challenges are exacerbated by the growing need for affordable housing, including updated critical infrastructure needs; international water control policies; water supply and quality for potable, agriculture and aquatic ecosystem needs; as well as the management of risks associated with coastal storms, riverine flood risk and stormwater management.

These partners, in collaboration with USACE, other Federal Agencies and non-Federal stakeholders, seek to develop a comprehensive plan focused on water resource related resiliency across the entire LRGV. USACE, with its technical and engineering planning expertise will support the development of a plan to meet the long-term viability needs of the Region





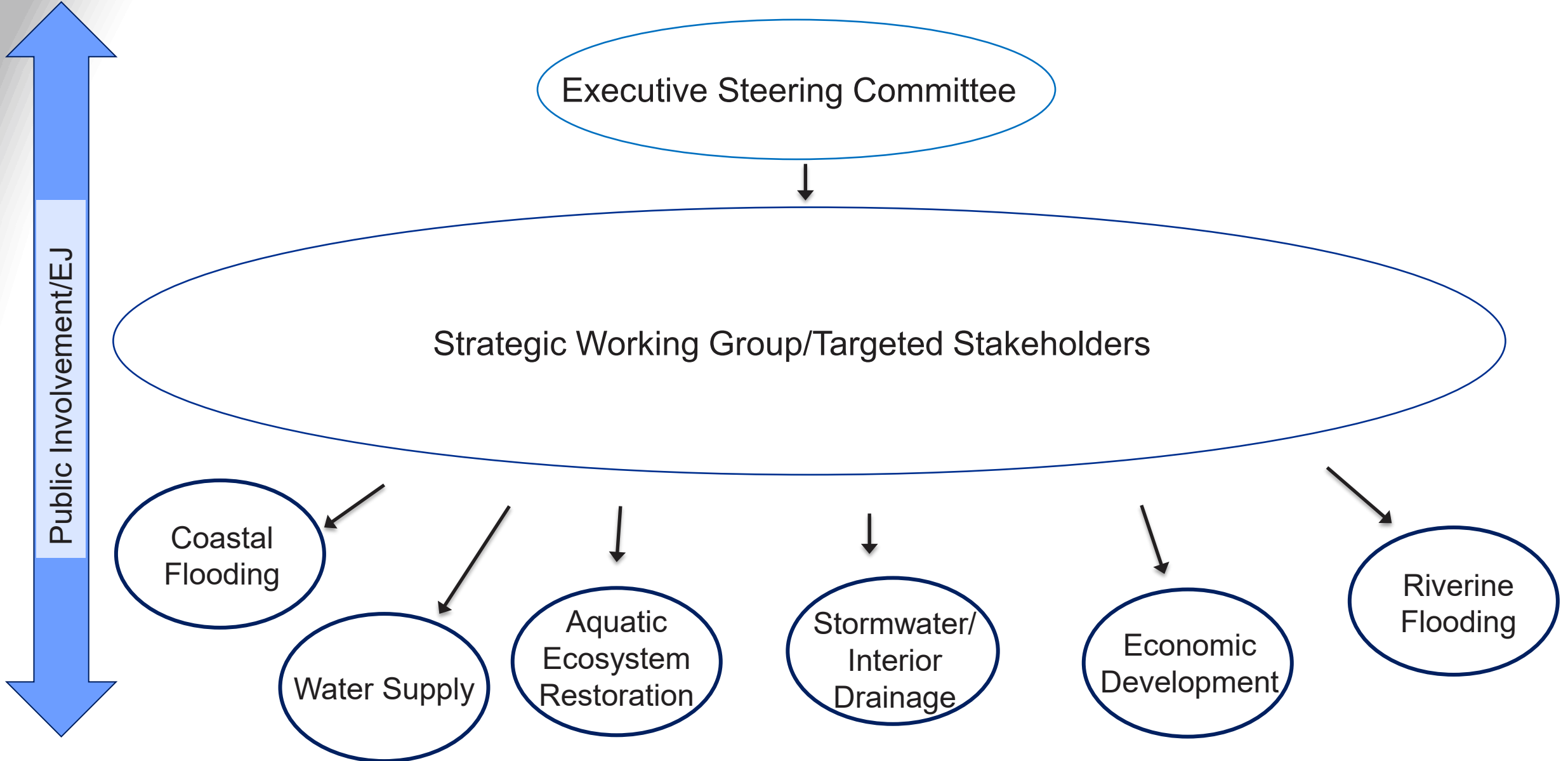
U.S. ARMY



US Army Corps  
of Engineers®

# COLLABORATION AND ENGAGEMENT

8







U.S. ARMY



US Army Corps  
of Engineers®

# OUTREACH EXERCISE

9



## Lower Rio Grande Valley Watershed Assessment (LRGVWA)

**Introduction:** The U.S. Army Corps of Engineers (USACE) in partnership with Cameron County is conducting a watershed assessment of Hidalgo, Cameron, Willacy, and Kenedy County. This assessment will identify the problems, opportunities, goals, and constraints facing agencies with water resource related responsibility in the region and will develop a strategic roadmap to inform future investment decisions by multiple agencies.

**Responses to the following questions will greatly assist us!**

- 1.) What organization do you represent?
  
  
  
  
  
  
  
  
  
  
- 2.) Please describe your organization's mission, responsibilities, and/or authority in relation to water resources?
  
  
  
  
  
  
  
  
  
  
- 3.) We are interested in identifying partners and stakeholders for the study. Are you or your organization interested?      **Yes** ☐      **No** ☐



U.S. ARMY



US Army Corps  
of Engineers®

# OUTREACH EXERCISE

10



- 4.) The study is looking at various water resource challenges throughout the LRGV. Which challenge are you interested in? If interested in more than one, please rank by priority.

<u>Challenge</u>	<u>Interested (Y/N)</u>	<u>Rank of "Yes's"</u>
Coastal Flooding		
Water Supply		
Ecosystem Restoration		
Stormwater/Interior Drainage		
Riverine Flooding		
Impacts of Socially Vulnerable Communities		

- 5.) What specific projects or actions are you taking to address the challenges above?
- 6.) Can we contact you about future meetings? If yes, please provide email address and contact information below. Please provide contact information for any other personnel from your agency/organization that we should coordinate with.
- a. Name/Org:
  - b. Email:
  - c. Phone:



# OPEN DISCUSSION

## Contact Information

Aaron Chastain

[Jonathan.a.Chastain@usace.army.mil](mailto:Jonathan.a.Chastain@usace.army.mil)

409-310-2484



U.S. ARMY

US Army Corps  
of Engineers®